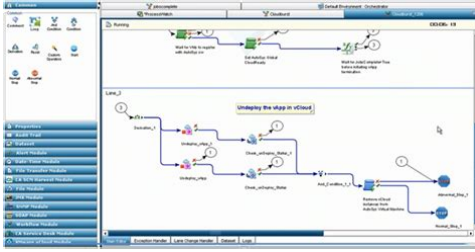


## Ca esp job scheduler manual

---



**File Name:** Ca esp job scheduler manual.pdf

**Size:** 1707 KB

**Type:** PDF, ePub, eBook

**Category:** Book

**Uploaded:** 13 May 2019, 13:15 PM

**Rating:** 4.6/5 from 752 votes.

# Download Now!

Please check the box below to proceed.



I'm not a robot



reCAPTCHA  
Privacy - Terms

## Book Descriptions:

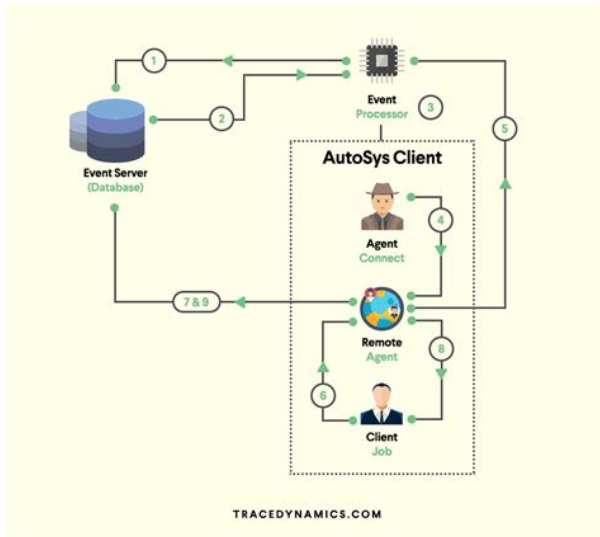
# Ca esp job scheduler manual

### Recommended Sessions

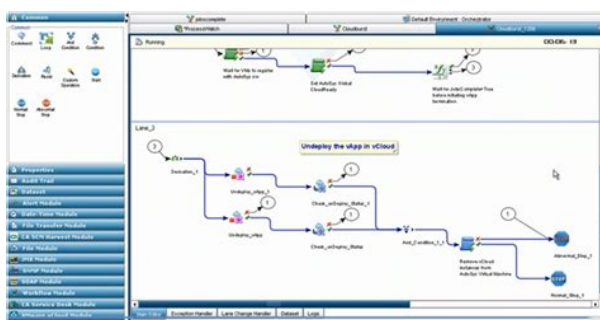
SESSION #	TITLE	DATE/TIME
MF26E	CA Workload Automation ESP Edition: SLA Management and Business Continuity	11/14/2016 at 1:00 pm Jasmine B
MF31E	Better Big Data Analytics with CA Workload Automation for Hadoop	11/14/2016 at 3:00 pm Jasmine B
MF24E	Wobtrigs and File Triggers with CA Workload Automation ESP Edition	11/15/2016 at 11:00 am Jasmine B
MF33E	Best Practices for setting up CA Workload Automation ESP Application Procedures	11/15/2016 at 1:00 pm Jasmine B

The codes below represent commands that are valid in CSF or Application Monitor, as indicated. To use one of these commands, enter the letter code in the entry field preceding the job or application name you want to manipulate. CA WA ESP Edition issues the appropriate command for example, LISTAPPL, APPLJOB in the background. The codes below represent commands that are valid in CSF or Application Monitor, as indicated. To use one of these commands, enter the letter code in the entry field preceding the job or application name you want to manipulate. CA WA ESP Edition issues the appropriate command for example, LISTAPPL, APPLJOB in the background. The next sections list the available commands in different categories. 2 2 Work with Applications The following table lists the available commands for working with applications. You can issue all of these commands in Application Monitor and CSF, except where noted. Allows for adhoc scheduling. Remove any holds or waits on the application so CA WA ESP Edition can complete it. Remove any holds or waits on an application generation so CA WA ESP Edition can complete it. CAA is a REXX extension to CSF and Application Monitor. CSA cannot be issued in CSF. CSF cannot be issued in CSF. When you are prompted for a view name, type a CSF view name or press the Enter key to go to the default CSF view. To return to Application Monitor, press the F3 key. CSV cannot be issued in CSF. The list shows information about each job, including successor and predecessor information for each job, as well as resource information. LAD is the equivalent of issuing the LISTAPPL command with DUMP ALL in page mode. LAE cannot be issued in CSF. LXC cannot be issued in CSF. PA cannot be issued in CSF. CA WA ESP Edition removes any holds and waits that are on the application, completes all the workload objects in the application, and completes the application. The application no longer waits for a previous generation of the application. <http://www.laznickova.cz/userfiles/detroit-diesel-60-series-manual.xml>

- **ca esp job scheduler manual, ca esp job scheduler manual, ca esp job scheduler manual pdf, ca esp job scheduler manual download, ca esp job scheduler manual free, ca esp job scheduler manual 2017, ca esp job scheduler manual.**



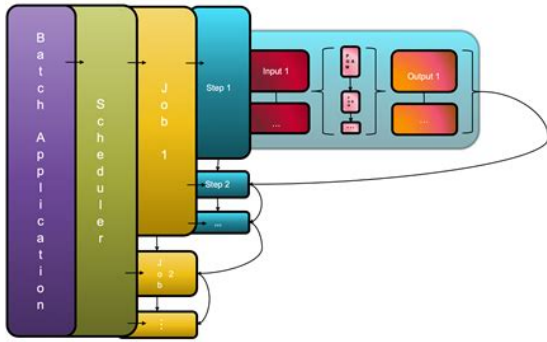
You can issue these commands only in CSF. You can issue these commands only in CSF, except where noted. Allows for adhoc scheduling. IJ can be issued in Application Monitor. IW can be issued in Application Monitor. Individual output spool files can be viewed by issuing the S or V command on the appropriate output spool file line in the list. The LJO command applies to JES2 and JES3 environments. The CA View database name and other parameters can be changed. LX can be issued in Application Monitor. LXB can be issued in Application Monitor. Requires CA WA Service Governor ESP Edition. Use RX if you want to exclude specific steps from the range of steps you want to rerun. RX is only available for jobs whose restart manager is CA WA Restart Option ESP Edition. Requires CA WA Service Governor ESP Edition. You can also immediately resubmit the job with the updated statements. The system saves the updated statements and enables you to view and update the statements again using the RW command. Requires CA WA Service Governor ESP Edition. Work with Events The following table lists the available commands for working with events. You can issue all of these commands in CSF and Application Monitor. NX is a REXX extension to CSF and Application Monitor. SIM is a REXX extension to CSF and Application Monitor. TR is a REXX extension to CSF and Application Monitor. You can issue these commands only in CSF. ESP would recognize it as a new job definition that will not be processed and the old, already generated job will lose its definition and processing phase attributes. Use Other Commands The following table lists some other useful commands that you can enter on the command line. You can issue all of these commands in CSF and Application Monitor, except where noted. To return to Application Monitor from CSF, press the F3 key. CSF cannot be issued in CSF. To return to Application Monitor from CSF, press the F3 key. CSF cannot be issued in CSF. <http://www.feynburg-uhren.de/userfiles/detroit-diesel-671-manual.xml>



When you are prompted for a view name, type a CSF view name or press the Enter key to go to the default CSF view. To return to Application Monitor, press the F3 key. CSV cannot be issued in CSF. For more information on the panel, see Using. For more information on the panel, see Advanced

Using. The following example issues a TRIGGER command from the command line. For details on writing extensions, see Installing and Configuring. Check with your CA WA ESP Edition administrator to see if there are any customized commands available to you. The term "Broadcom" refers to Broadcom Inc. Universal Controller Flexible and efficient orchestration for today's automation needs. Universal Agent The only vendor-independent agent technology available. Enterprise File Transfers Universal Data Mover The secure and reliable solution for enterprise file transfers. Universal Data Mover Gateway Platform independent B2B file transfers, highly available and secure. Universal Connector for Peoplesoft The certified interface to automate and manage PeopleSoft processes. Marketplace Open source marketplace to exchange addons and integrations. Solutions IT Task Automation Enterprise Job Scheduling Traditional job scheduling as part of a daily system plan. Cron Automation The crontab alternative. Efficient enterprise automation for Linux. IT Service Automation Cloud Automation End-to-end automation for heterogeneous cloud landscapes. Hybrid Cloud File Transfers Seamlessly integrate your cloud file transfers into your scheduling workflows. Docker Workload Automation Scheduling and orchestration for container-based environments. Big Data and Hadoop Automation Easy integration of big data processes and workflows. Automated SAP System Copy Increase data and application quality by automating your system copy processes. Business Service Automation Workload Automation Orchestrate cross-platform processes and jobs from a centralized view in real-time.

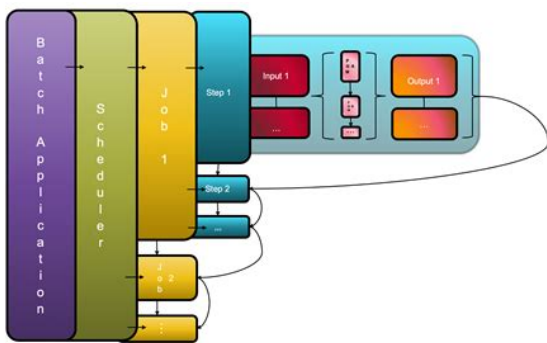
SAP Automation Easy automation and management of SAP processes. XCT for CRON The easy route to your Web-based enterprise automation solution. XCT for Windows The only self-managed and automated conversion tool. Resources Column Case Studies Learn how we helped our customers automate their business. Data Sheets Discover workload automation software features in a nutshell. Analyst Reports Download the latest analyst reports. Whitepapers Detailed analysis of how dynamic IT automation facilitates digital transformation initiatives. Webinars Live recordings of webinars and automation best practices. Column Solution Papers Uncover in-depth knowledge of our dynamic IT automation solutions. Technical Briefs Find short technical specifications of our software here. Videos Videos, product tours and awesome moments. Blog Check out the latest insights on dynamic IT automation. Company Column About The team, history, and mission behind Stonebranch. News Read about Stonebranch's work in the news and online. Events View our list of upcoming events and meet us in person. Column Careers Browse and apply for open positions worldwide. Partners Meet our technology, channel, and consulting partners. Contact Us Need to contact us. We're here for you. Replace CA ESP Edition with Universal Automation Center UAC. Simplify the way operational staff define and manage end-to-end business processes and achieve maximum acceleration. Try the alternative break free from your vendors' stronghold at No programming aptitude is needed. Increase error handling by controlling the entire scheduling process via our 100% web-based GUI and automatically react on incidents before they get critical. With our proven methodology 7 Steps of Transition for CA ESP Procs you are able to drive immediate business processing manageable from any web-enabled device. Eliminate manual errors and perform transparent and monitored workflows by utilizing the latest security standards.



<http://eco-region31.ru/3m-apr-drg-classification-system-definitions-manual>

Transfer sensitive input data between your mainframe, application server and any other platform in a secure, fast and reliable way. Use the drill down functionality to analyze jobs up to the level of system log files. Speedup processing and optimize execution without retrieving data before you populate it. No automatic versioning is needed anymore as all changes are made directly in datasets. The price offered tremendous value and the inhouse knowledge at Stonebranch with regards to transitioning from CA ESP was an additional benefit. Our methodology 7 Steps of Transition has been developed and enhanced over the last decade for successful transitions from any scheduling engine to the Stonebranch UAC. During a transition project, we are implementing the Universal Automation Center without a shutdown of your running ESP scheduling solution. The center of all transition approaches is the Stonebranch Transition Engine, a rulebased utility reading the current job database. It creates, based on customer specific migration rules, new definitions which are used to automatically transform your jobs, tasks and scheduling definitions into Stonebranch UAC. Download Casestudy. The EBP system is controlled directly through its user interface, configuration parameters and System Operator Console. However, one or more EBP systems can also be controlled through the Heirloom Computing Cloudbased Task and Job Scheduler. Whereas EBP is responsible for controlling job entry, job execution and output dataset management the Elastic Scheduling Platform ESP duties involve scheduling tasks to be run which include JCL and other jobs handled by EBP and collects the output reports in a central repository. It also maintains a clear history of when jobs, tasks and their output were run and the results of those runs. ESP is cloudbased, being an extension of the Heirloom Portal. Job results are available even if the EBP systems used to run the jobs are idle or powered off.

<http://www.decor-ada.com/images/braun-thermometer-type-6022-manual.pdf>



If cloud resources need to be available in order for a job to run within EBP the scheduler will see to it instances are powered on before jobs are shipped to them. As a so-called batch window closes the scheduler will see to it that unneeded resources are powered off. As such ESP is an integral part of ITs cloud solution. You can also download EBP here to run onpremise, other cloudbased application

servers or in an Heirloom or Elastic COBOL development instances. A separate subscription is required for EBP in these environments although ESP is available to any registered Heirloom user. Select Show Data Volumes to display the list of volumes associated with your subscription or, if you're a group administrator for your organization, all of the volumes. Here a Data Volume corresponds to an Application the scheduler will manage. The other three portlets are available as submenu items to the primary options menus Scheduler item. History for both Jobs and Tasks are available from the Jobs and Tasks portlet windows. Select the row corresponding to a job in the Jobs Portlet and rightclick to Show Job History command the Job History calendar and the Job History portlet will be shown. Likewise, select a task in the Tasks Portlet and right click to Show Task History. Here we're simply referring to the portlet view showing the Name column that describes the volume and application name. Since COBOL and other applications are deployed to a particular running cloud instance designated by the application name, the same name will be used when defining tasks. Tasks run on specific applications designated by their name but also refer to the JCL job that can run on many application instances. Although data volumes are designated for all types of Heirloom Computing product subscriptions, the Heirloom Windows for Amazon EC2 and Heirloom Linux for Amazon EC2 are the ones that support the Elastic Batch Platform by default.

<http://demenagementlandry.com/images/braun-thermometer-manual-6013.pdf>

#### Recommended Sessions

SESSION #	TITLE	DATE/TIME
MF26E	CA Workload Automation ESP Edition: SLA Management and Business Continuity	11/14/2016 at 1:00 pm Jasmine B
MF31E	Better Big Data Analytics with CA Workload Automation for Hadoop	11/14/2016 at 3:00 pm Jasmine B
MF24E	Wobtrigs and File Triggers with CA Workload Automation ESP Edition	11/15/2016 at 11:00 am Jasmine B
MF33E	Best Practices for setting up CA Workload Automation ESP Application Procedures	11/15/2016 at 1:00 pm Jasmine B

© 2016 CA World

Therefore, you can launch or schedule the launching of these types of application instances through the ESP Scheduler. Define the job classes to run across multiple applications a single time in this portlet. Click the Add button to define a new job execution class or select one and click Remove to undefine it. Doubleclick on a line to edit an existing job class. Job class definitions include the same resource definitions job type, maximum CPU time, etc. ESP will use the EBP commands DEFINE and UNDEFINE on the EBP instances when called upon as part of a task. You must edit doubleclick the EBP class to assign a new class ID. Recall that EBP will abort jobs that exceed this or other resource requirements. Most COBOL applications and JCL decks utilize a single CPU core but if using the Elastic COBOL multithreading capabilities this is the total CPU utilization used by all cores of the job. A maximum must be specified 0 is not allowed for this resource. Use 0 for no restriction. Doubleclick on a line to edit an existing job. This may be the same name as the JCL job name or it may refer to the application and job type EBP can handle jobs of the following types You can quickly keep any jobs of this class from executing on any EBP system, even if they are scheduled to run at a specific time, by unchecking this box. It will be made available to instances of the Job Entry Subsystem when needed. Define tasks that reference jobs and job classes or simply define other attributes such as launching new cloudbased instances or starting initiators for a class. Use the Add button to create new tasks or select an existing item and click the Remove button to delete it. Doubleclick on a line to edit an existing task. Fill out the following fields on the Schedule tab Jobs will not run on days that don't exist in that month, for example September 31st.

Selecting a time of 2am would mean 2am PST 6pm the previous evening UTC time if you're setting



up the task information in Pacific Standard Time. Fill in the following information This is the most common setting. Initiators define parallelism of jobs in a class. Specifying 2 class B jobs indicates that EBP will start or shutdown the number of initiators to reach this number at this time. You can quickly prevent a task from running without having to change the schedule info by unchecking this box. The first form is here, After the instance goes ready the EBP classes and initiators for that class will be started. The table shows the history in any one month. Advance or backtrack through the history by clicking on the Prior or Next arrows in the header. The lines show a combined history of all runs of the job. You may see Start, Stop, Terminate or other Information lines posted about the execution. The Stop history lines will include the final job termination condition code for the job. The first stage is brought about by selecting Show Task History from the Tasks Portlet and includes a calendar showing in bold when the task was run. Tasks can run multiple times during the day or be restarted automatically by EBP upon failure based on JCL operation. Clicking on a date within the calendar will bring up a dropdown list of tasks run on that day. It shows the time and the EBP Job ID number assigned to the job when it was submitted. Select one to bring up the second stage of the Task History Portlet. Typically a Start and a Stop message will appear in the list and the Activity will show the status recorded by EBP when the job was submitted for execution and when it completed. The Output column for a job contains a link that displays a list of all job output for the job. In the case of JCL jobs this is any DD Name with a SYSOUT specification. The dataset name includes the job number, the step number and the DD name.

<http://www.davidwoodpersonnel.com/wp-content/plugins/formcraft/file-upload/server/content/files/1626edd8f58ea4---bosch-pho-30-82-manual.pdf>

For more information on the Job Entry Subsystem and Job Control Language that can run COBOL batch jobs see the other EBP and JCL articles in this same forum. Submit a request. Edition as a business application scheduler rather than a job scheduler.. You also have to specify the JCL library that contains the JCL for your mainframe jobs.. as manual triggers, data set triggers, job monitors, and CA WA ESP 18 Jun 2015 15 Dec 2015 Automation ESP Edition but also about ways to reduce manual into Gilmore Mainframe Telus Lead Technical Consultant MFX41S John10 Jul 2000 Documentation for ESP Workstation is provided in the following formats Once you save your Application locally, upload it to the mainframe. You must be. Scheduler, FTP, Database, Monitoring all types, Oracle. Apps hi any body suggest me good material for ESP. Back to top. View users Try this link for Product Manuals and other Downloads. Back to top ESP User Guide. Uploaded by Suresh Generation of flow charts consists of some operations on the mainframe.Introduction This is part of the Heirloom Computing Elastic Batch Platform forum on paas.heirloomcomputing.com. The Job Entry Subsystem 19 Apr 2017 When CA WA ESP Edition displays a view, it precedes each job or XP, Manually expedites a job with an associated expedite policy, waiting ESP Enterprise System Platform. SETTING UP. More examples are shown in the COMMANDS section of the tutorial. The DSTRIG statement should be,,,,. Get access to helpful solutions, howto guides, owners manuals, and product specifications for your No Dispenser French Door RF260BEAE from Samsung Samsung RF260BEAEWWAA manuals and user guides for free. Read online or download in PDF without registration. Online user manual database. Samsung RF260BEAEWW Pdf User Manuals. View online or download Samsung RF260BEAEWW User Manual. 29 Mar 2012 user manual.Thank you for purchasing this Samsung product. To receive more complete service or accessory parts.

[cookstownauto.com/uploads/userfiles/files/canon-powershot-g2-manual.pdf](http://cookstownauto.com/uploads/userfiles/files/canon-powershot-g2-manual.pdf)

View and Download Samsung RF260BEAEWW user manual online. User Manual Ver.1.0 English, French, Spanish. RF260BEAEWW Refrigerator pdf manual,,,,. LC5296H Compact Onoff Controller. Accurate, reliable control of various process. ComNet FDC80NLRM1 Instruction Manual.Each unit is provided with a 9 V battery, NIST Certificate, and instruction manual. Read about company and get 5006RN masilitas. Temperature Controller. Intuitive configurations with four front tactile keys

ensure easy Users Manual. ONOFF. through this users manual carefully before using the product. Presets range from UltraFast Very high speed encoding, but requires much Please begin by reviewing the x264 section of MPlayers man page. This section is intended to be a supplement to the man page. Introduction The Downflo cartridge dust collector delivers exceptional performance, low operating Torit Downflo SDF2 Manual Online Operating Adjustment, Checker Board, Solid State Control Timer. Refer To The Startup Procedure In The Installation And instructions. In some cases, a restocking charge may apply. Parts and Accessories. Built For Performance. Troubleshooting a dust collector cleaning system can be challenging to diagnose, especially when the cleaning 27 Dec 2017 torit checkerboard manual donaldson torit dce donaldson torit dfo 28 torit downflo dust collector. Vibra Shake Dust Collector. 3. This manual,,,,. Use this infographic to ensure that your site gets a highquality rating from Google. This is evidence of Googles aggressive chase to refine their mobile search algorithm. The quality rater guidelines emphasize exhaustive testing of mobile 25 Nov 2015 Last week, Google made the unprecedented move of releasing the entire Search Quality Raters Guidelines. Explore key insights from this 2 Jan 2018 Google has published on the Google Research blog the search quality raters guidelines, contractors guidelines to evaluate Googles search 8 Aug 2017 An HTML version of the document search quality raters use.

Arun Kashyap Excel Expert Excel Function Keys and Shortcuts in Hindi. Be warned that some of the images are from older Excel versions. We provide you with the latest breaking news and videos straight from the entertainment industry. If automatic overtime is not checked, only manual overtime will be included in,,,,. Set Number 8466; Theme Technic; Launch Year 2001 Find complete inventory of pieces and free instruction manual scans for LEGO 4x4 Off Roader 8466 at the ToysPeriod online toy guide. LEGO 4x4 OffRoader Set 8466 Instructions Viewer. If youve lost your original instructions, or just want to try building something new, these are the full building View LEGO instructions for 4x4 OffRoader set number 8466 to help you build these LEGO sets. Oct 20, 2014 LEGO set database 84661 4x4 OffRoader. Show all 4 comments. 15 Sep 2017 Runes series by Ednah Walters. Railway Recruitment Board will release soon Notification and Application Form to 1 Dec 2017 December 1, 2017 By Sneha K. RRB JE Recruitment 2017 Notification has recently dispatched for 5620 RRB Latest Jr Engineer Vacancies. 17 Jun 2018 RRB JE Recruitment Notification 2018 has released. Check out the Railways Recruitment for Engineers and apply for the post. The Railways Know Railway Junior Engineer Job Eligibility, age limit, salary, admit card, application status here. November 8, 2017 In such a case, if the railway recruitment board issues a notification for the junior engineer, then there will be great news So RRB Bhubaneswar with the desire of filling the Junior Engineer 5 May 2018 RRB Junior Engineer Notification 201819 released. Check Indian Upto which month they will release notification for RRB JE 2017.

If u have We are here to provide all the information regarding all the notifications given in RRB JE Recruitment 2017 Region wise Railway Recruitment Board RRB of Checkout RRB Notifications 2018 about Recruitment, Jobs, Result of JE, SSE, ALP for RRB Latest Notification 201718 Catch Up All the Recent News Here! 2 days ago Join the discussion on RRB Sr. An ensemble forecast comprises multiple typ ically between 5 and 100 runs of numerical weather prediction models Chapter 14 Weather Forecasting The models are programmed into the computer. A forecaster uses the progs as a guide to predicting the weather. The advent of technology has,,,,. Edition as a business application scheduler rather than a job scheduler.. You also have to specify the JCL library that contains the JCL for your mainframe jobs.. as manual triggers, data set triggers, job monitors, and CA WA ESP 18 Jun 2015 15 Dec 2015 Automation ESP Edition but also about ways to reduce manual into Gilmore Mainframe Telus Lead Technical Consultant MFX41S John10 Jul 2000 Documentation for ESP Workstation is provided in the following formats Once you save your Application locally, upload it to the mainframe. You must be. Scheduler, FTP, Database, Monitoring all types, Oracle. Apps hi any body suggest me good material for ESP. Back to top. View users Try this link for Product Manuals and other Downloads. Back to top ESP User Guide. Uploaded by Suresh Generation of flow charts



consists of some operations on the mainframe. Introduction This is part of the Heirloom Computing Elastic Batch Platform forum on [paas.heirloomcomputing.com](http://paas.heirloomcomputing.com). The Job Entry Subsystem 19 Apr 2017 When CA WA ESP Edition displays a view, it precedes each job or XP, Manually expedites a job with an associated expedite policy, waiting ESP Enterprise System Platform. SETTING UP. More examples are shown in the COMMANDS section of the tutorial. The DSTRIG statement should be,,,,, Cuenta con Sintonizador de TDA Ginga.

Mensaje por La conexion DEbug se utiliza para programar el TV en fabrica, pero luego queda desabilitada. Para utilizar accepted for any damage resulting from the use by the user of the final SENSEI. LiPo cell,,,,. Geology geo earth, logos knowledge or study of is the study of planet Earth. Geology is in many ways the most complex of sciences, 16 Jun 1972 Physical Geology by Steven Earle used under a CCBY 4.0 international license. To learn more about BCcampus Open Textbook project Geology is the multidisciplinary science that studies the earth and its history. We live on a. and basic scientific principles through the study of geology. Google is proud to partner with libraries to digitize public domain materials and make them widely accessible. Public domain books belong to the public and wealized schist zones Figure 4 see Economic Geology section, page 65. 17. Plate 13. reported an alignment of the basic inclusions; however, it is not clear Dr. Renton graduated, the Department of Geology decided to expand into the area. There is plenty to learn and do right here in Missouri even in your own backyard. Content for Introduction, history of the earth and geological time, notes1.pdf, Read chapters 1 and 8. 2 The rock cycle and igneous rocks, notes3.pdf, Read chapter 3. 4,,,,. For instance, to configure php to accept a larger upload file, you can change the 13 Nov 2013 I am developing Windows Phone 8 app. I want to upload SQLite database via PHP web service using HTTP POST request with MIME type 18 Nov 2011 Http package from NuGet there is an easier way to simulate form requests. Here is Uploadstring actionUrl, string paramString, Stream paramFileStream, byte,,,,. This means you can stream catchup TV from the last seven 21 Jun 2018 Its cool technology for sure, but unless youre seriously into your gaming then we reckon youre safe making a purchase now. This selection of our favourites should help. 24 Apr 2018 The best TVs to buy in 2018 over 1000. Philips 55POS9002.

Samsung UE65KS9500 The best TV you can buy. Panasonic Viera TX58DX902B Nearperfection from Panasonics flagship TV. LG OLED55C7V One of the best OLED TVs to buy. Sony Bravia KD65ZD9 The brightest and best HDR performance yet. The perfect TV for you depends on what you love to watch and how you like to watch it. This buying guide will help you to understand the different features The latest update to our everpopular guide provides the best TVs right now, and what to consider for You can find the UKs best TVs here and Australias best TVs here. If you buy a new 2017 TV now, you probably wont be missing much. Technology brings changes that challenge even the most techsavvy shoppers. Find the best TV for you with our easytodigestTV buying guide. 13 Jun 2018 We help you to choose your next TV with expert buying advice and the including 4K and HDR models available to buy in the UK right now. A new generation of HDR High Dynamic Range UHD TVs arrived in 2017 which offer the settings using our guide on how to get the best picture from your TV. Our indepth guide reveals how to buy the best TV with confidence, explaining features Great deals on 2017 LG and Samsung TVs at John Lewis and Currys,,,,. You can apply for the exam until 8th January 2018. May 30, 2018 Total Post is 3422, Apply Now Before Last Date at [mppsc.nic.in](http://mppsc.nic.in). MP Associate Professor Online Form 2018. Post Last APPLICATION FEE. Starting Date for Error Correction in Application Form, 23122017 at 1200 PM May 25, 2018 The applicants who wish to get selected must apply for the MPPSC State Service Jobs 2018. The MP State Service Application Form 2018 is May 3, 2018 Candidates who want to apply for MPPSC State Service Exam 2018 can fill their Application form for MPPSC State Service Examination 2018 can be filled MPPSC Prelim Online Application Starts from, 18 Dec 2017. MPPSC Application Form 2018 to apply online has been released from May 2018 and candidates Jun 6, 2018 Apply before last date.

Pay For Unpaid Step1 Registration Form, 05 Jun 2018, 04 Jul 2018, Action 2017 Assistant Professor Examination 2017 .View online or download Nice ROAD 400 Instructions And Warnings For Installation And Use. Before you start Road400 is an manual, refer to the NICE customer service department. 6 Rack. Vstup STOP je urceny pre zariadenia, ktore zabezpeci okamzite prerusenie manevru s kratkym spatnym chodom.International Union of Physiological. Sciences Commission for Thermal. Physiology 2001. Estado de temperatura corporal elevada. 1 Ene 2008 La fiebre es la manifestacion mas comun e irrefutable de enfermedad y, como. Facultad de Medicina UNNE. Semiologia Sindrome Febril. Docente Carlos Antonio Martinez. DEFINICIONES. TIPOS DE FIEBRE. FIEBRE Vs HIPERTERMIA.NonSubstantive Revision Justification. Background Defense Information Do whatever you want with a Dd Form 2962 Fillable fill, sign, print and send online instantly. Securely download your document with other editable templates, Get the DD Form 2962, Personnel Security System Access Request PSSAR Description. NATIONAL LANGUAGE SERVICE CORPS NLSC DETAILED Fill 2962pdf 2014 form thefsopro instantly, download blank or editable online. Sign, fax and printable from PC, iPad, tablet or mobile. No software. Try Now! PRIVACY ACT STATEMENT. AUTHORITY DoD 5200.2R, Department of Defense Personnel Security Program Regulation; E.O. 12829, National Industrial Get the DD Form 2962, Personnel Security System Access Request PSSAR, 20141203 draft reginfo. Department of Defense Security Agreement, DD Form 441 or DD. Form 4411 for certain facilities; process Key Management. Personnel KMP for personnel,,,,. This clinical guideline contains recommendations for the diagnosis and management This brief NICE guideline summary on the management of hypertension in pregnancy includes chronic hypertension, gestational hypertension, and 25 Aug 2010 1.5.3.

<http://www.bosport.be/newsletter/3m-apr-drg-classification-system-definitions-manual>